

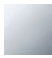


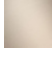


**CL.1 Deck-mounted basin spout without pop-up waste - Chrome**

CL.1

13 714 705

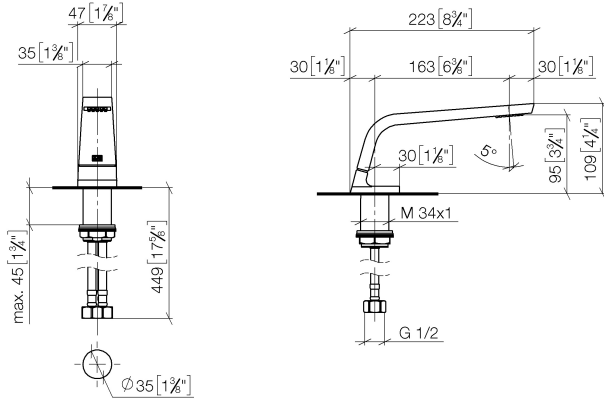


- 160mm projection
- fixed spout
- rectangular spray pattern with 40 individual jets
- height of mixer 108 mm
- height up to aerator 94 mm
- hole diameter 35 mm
- 2x screw-in M 10 x 1 pressure hose, leak-tested
- 1/2" connection
- max. flow 4 l/min
- lead-free
- This product can help a building meet the requirements of Green Building Rating Systems, e.g. LEED®, BREEAM®, DGNB

|   |                               |               |
|---|-------------------------------|---------------|
|  | Chrome                        | 13 714 705-00 |
|  | Brushed Platinum              | 13 714 705-06 |
|  | Dark Chrome                   | 13 714 705-19 |
|  | Brushed Champagne (22kt Gold) | 13 714 705-46 |
|  | Champagne (22kt Gold)         | 13 714 705-47 |
|  | Brushed Dark Platinum         | 13 714 705-99 |

13 714 705

mm [inches]



**Flow rate chart**



**Codes & Standards**

ASME  
A112.18.1/CSA  
B125.1

California Energy  
Commission  
(CEC)

NSF/ANSI 372

NSF/ANSI/CAN  
61

Water Sense





## CL.1 Deck-mounted basin spout without pop-up waste - Chrome

---

CL.1

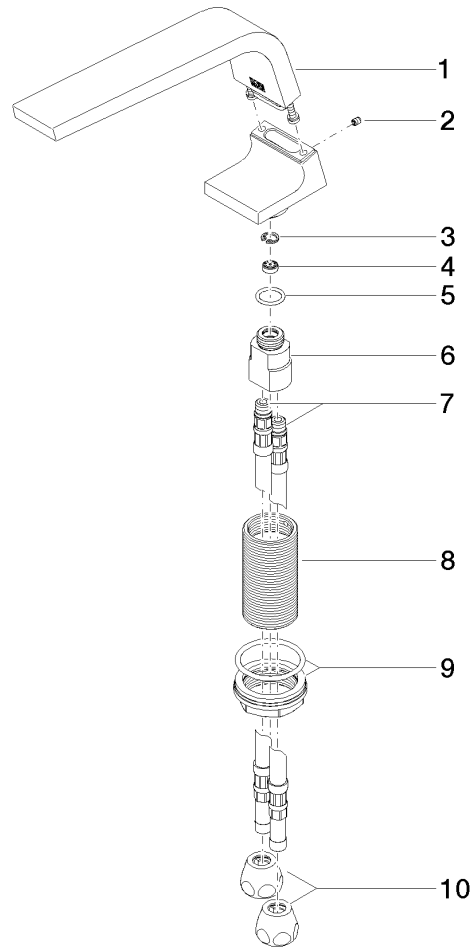
13 714 705

### Certificates

---

GDV\_0400279.      LGA\_28686.      IAPMO\_N-4976.      IAPMO\_8834 (1).      IAPMO\_4976 (6).  
WRAS\_1512011.      IAPMO\_6397.

13 714 705



Spare parts list

| No. | Item Number        | Name               | Quantity used | Delivery time |
|-----|--------------------|--------------------|---------------|---------------|
| 1   | 90 11 70 002 00-00 | spout              | 1             | 10            |
| 2   | 09 31 11 044 90    | pin                | 1             | 2             |
| 3   | 09 16 01 016 90    | ring               | 1             | 2             |
| 4   | 09 23 01 034 90    | flow reducer       | 1             | 2             |
| 5   | 09 14 10 130 90    | seal               | 1             | 2             |
| 6   | 09 11 10 055 10 90 | connection         | 1             | 2             |
| 7   | 04 30 04 016 00 90 | hose               | 2             | 60            |
| 8   | 09 30 01 208 90    | connection         | 1             | 2             |
| 9   | 04 23 10 044 06 90 | fixing set         | 1             | 2             |
| 10  | 90 23 30 040 00-00 | threaded connector | 2             | 10            |